

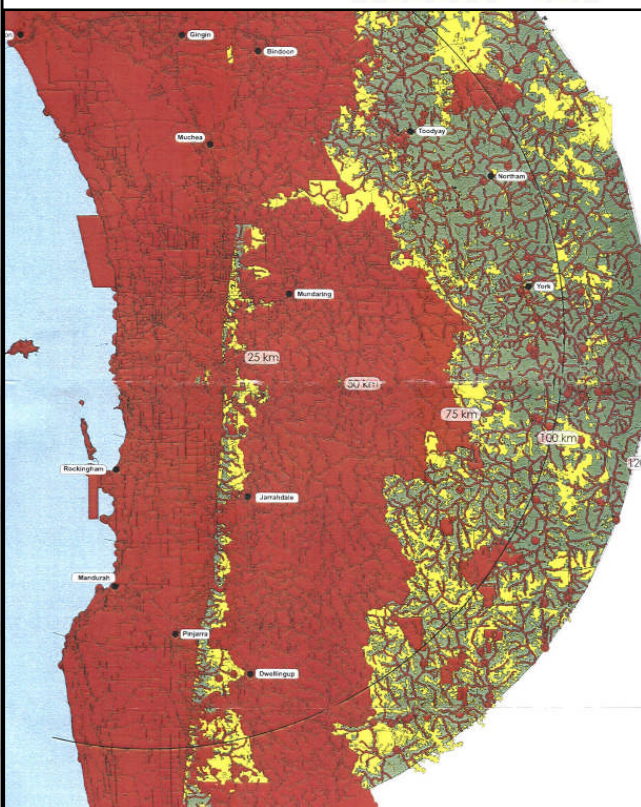


## PROJECTS

### GIS & OTHER PROJECTS



Aerial photograph courtesy of DoLA



Data courtesy of DoLA, AUSLIG, Agriculture WA, Australian Heritage Commission, Bureau of Meteorology, CALM, DME, GSWA, MIP, Water Corporation, WRC, DEP

GIS 1

#### DEPARTMENT OF ENVIRONMENTAL PROTECTION GIS Study- Siting of a Class 4 (secure) landfill for low-level wastes near Perth

A site selection & project implementation study to establish a Class 4 secure landfill to receive low-level waste was undertaken on behalf of the DEP and the Joint Government Secure Landfill Siting Committee.

A geographical information system (GIS) database was established for the area within a 120km radius of the Perth CBD, including geological hydrogeological, land-use and planning data.

Detailed exclusion, less desirable and preferred siting criteria were used to determine composite maps showing areas with development potential.

Existing void spaces from mining/quarrying operations were examined and prospective sites were visited.

Initial landfill development requirements were costed for the fifteen most highly prospective sites.

Hydrosolutions Pty Ltd  
38 Sheldrake Way  
Willetton  
Western Australia 6155  
Tel: (+61 8) 9457 5448  
Fax: (+61 8) 9457 4293  
Mob: 0403 021533

E-mail: [stuart.jeffries@hydrosolutions.com.au](mailto:stuart.jeffries@hydrosolutions.com.au)  
Website: [www.hydrosolutions.com.au](http://www.hydrosolutions.com.au)